

Lights of the Lakes

A Photographic Tour of Great Lakes Lighthouses

◆ Intended Audience

Lights of the Lakes is perfect for anyone interested in lighthouses, Great Lakes maritime history, shipwrecks, or even recreational boating and sailing. Over three thousand people have enjoyed the show since its inception.

◆ Program Overview

Lights of the Lakes is an original slide show accompanied by music and sound effects. Consisting of over 200 images, the program includes portraits of 56 different Great Lakes lighthouses. The other pictures are of shipwrecks and historical subjects depicting mining and lumbering activities in the 19th and early 20th centuries. The importance of these industries at that time necessitated the construction of many of the light stations seen in the show, to help facilitate water transport of mineral and timber products to distant markets.

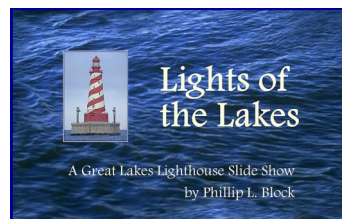
Geographically, the lighthouse tour starts in the northwest corner of Lake Superior, traces the coast to Whitefish Bay, then moves on to Lake Michigan, where we travel downbound from the Straits of Mackinac along the western shore as far as Milwaukee, Wisconsin. Many offshore lights are also included.

The program optionally concludes (time permitting) with a tribute to the Great Lakes ore carrier *Edmund Fitzgerald*, producing an emotionally powerful conclusion to the program.

◆ Program Format

Lights of the Lakes is an hour-long presentation featuring the lighthouse photography of Phillip L. Block, who narrates the program from a prepared script.

The Great Lakes lighthouses shown are situated on the shores and islands of Lakes Superior and Michigan. Recurring subordinate themes include lighthouse technology, both past and present, and shipwrecks that occurred when the technology failed.



— Program Objectives —

- ◆ Celebrate the picturesque beauty of our remote Great Lakes lighthouses, which are captured in many different settings and in all seasons.
- ◆ Educate the viewer as to why the light-houses were originally built, and explain their historical significance to shipping on the Great Lakes.
- ◆ Sensitize the viewer to conditions threatening the continued existence of our historic lighthouses.

Technical Requirements

Required Equipment and Furnishings

The speaker provides a laptop computer, digital projector, and self-contained sound system complete with microphone.

Program sponsor is responsible for providing:

- [] 6' or equivalent folding table for speaker's use. If not available, a 4' square or similar-size table is acceptable.
- [] Heavy duty (3-prong grounded) power cord for the laptop, projector, and sound system. The cord should be run to the area beneath the table and if possible, taped down or secured to prevent tripping.
- [] Audience chairs should be set up facing the screen, plus a chair at the speaker's table.
- [] It is essential to darken the room if the show is to be presented during daylight hours.

Optional Equipment

- [] Large projection screen, centered in front of the audience (wall or ceiling-mounted screen ideal). If the facility already has a large screen available, speaker will use that instead of a portable screen.

If a house screen is not available, speaker can provide an 80" diagonal portable screen.

Lights of the Lakes

has been enjoyed by over 3,000 viewers in many public performances. Call now to arrange this presentation for your group or organization.

Phillip L. Block



Phil is a native of the Great Lakes area, and is drawn to the woods and waters along their shores. He is an accomplished photographer, writer, and dedicated lighthouse enthusiast.

Originally from Michigan, Phil now resides in Port Washington, Wisconsin. He is retired following a career in management, training, and technical communications. A former U.S. Army officer, he is a business graduate of Michigan Tech University in the Upper Peninsula.

Phil is a longtime member of the Great Lakes Lighthouse Keepers Association, which is dedicated to the preservation of the history of Great Lakes Lighthouses and the people who kept them. He also serves as a volunteer docent and tour guide at the Port Washington 1860 Light Station.

— To Schedule a Presentation —

Lights of the Lakes is frequently requested by maritime and historical organizations, boat and yacht clubs, and similar groups of lighthouse enthusiasts. To schedule a show for your group, please contact:

Phillip L. Block

1570 Parkview Lane

Port Washington, WI 53074

[H] 262-284-2505 [C] 414-559-7600

Web Site: www.lightstations.com

E-mail: philblock@yahoo.com

What Others Have Said About Lights of the Lakes

- ◆ “Your dazzling, comprehensive presentation was informative and impressive to all those in attendance. Weaving in the maritime past from a sailor’s perspective gave added impact to the outstanding visual stimulation. The script, transitions, and sound effects were impeccable.”
– *Sailing Club, UW-Milwaukee*
- ◆ “The show was superbly photographed and organized, and I could certainly tell that you put a lot of time and effort into it. All of the people in the audience obviously enjoyed it very much.”
– *Mead Public Library, Sheboygan, WI*
- ◆ “The slides you used were excellent and illustrated your lecture very well. The audience really enjoyed your presentation, judging from the reaction and response. Your materials on display, and the music, added a great deal to the presentation.”
– *The State Historical Society of Wisconsin, Madison*
- ◆ “Your presentation was super. It was without a doubt the finest program that our club has seen, and we all came away with substantial additional knowledge of the Great Lakes.”
– *Milwaukee Harbor Yacht Club*
- ◆ “This program was excellent and put together beautifully. Phil Block did a fantastic job.”
– *Wisconsin Maritime Museum, Manitowoc*

Lights of the Lakes



A Great Lakes Lighthouse Slide Presentation by Phillip L. Block